

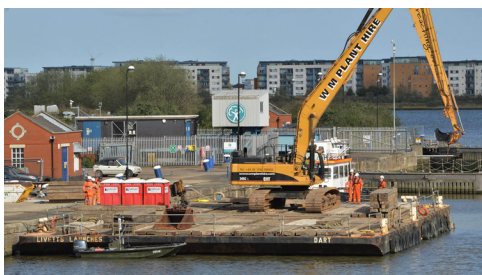
## DART

CATEGORY: Barges, Pontoons



### SPECIFICATIONS:

LENGTH OVERALL	26m
BEAM	18m
MOULDED DEPTH	1.9m
DECK AREA (m3)	400m 3 Plus
FREEBOARD	1.6m
CLASSIFICATION	PLA Cat C & D
AREA OF OPERATION	Chiswick to Thames Estuary including River Medway
EQUIPMENT	6 point mooring system by arrangement: 2 spud legs at 24m; 4 spud wells Hand/Guard rails



### SUMMARY:

Dart is a multi-purpose flat top steel pontoon. One of the most uniquely-sized vessels on the River Thames – her reinforced steel deck makes her ideal for heavy loads and she can be deployed as a crane barge for cranes up to 120 tonnes in size – Dart has proven to be a crucial cog in the Livett's fleet since her acquisition in 2011. She can be used as a platform for marine civil engineering, bulky loads, fireworks, roll on/off, special events, and as a landing stage. Dart underwent major refurbishment in May 2023, which included the installation of new hatch lids, side shell plating, anodes, decking repairs, and fresh paintwork.

# LIVETT'S



# WE ARE LIVETT'S

BETTER BY WATER



EMAIL  
[info@livetts.co.uk](mailto:info@livetts.co.uk)



CALL  
Tel: +44(0)20 7378 1211