

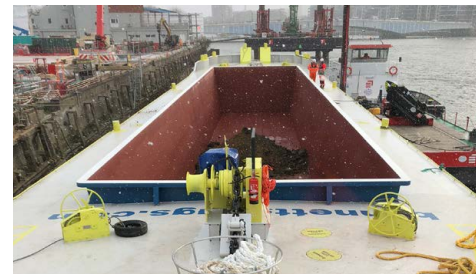
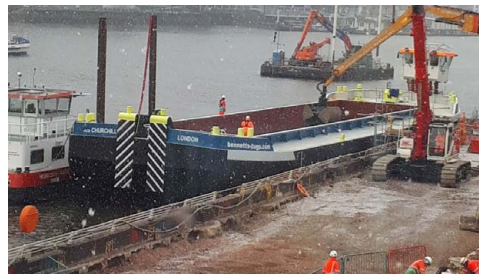
CHURCHILL

CATEGORY: Barges



SPECIFICATIONS:

| | |
|----------------|--------------|
| LENGTH OVERALL | 50m |
| BEAM | 11.4m |
| MAX DRAFT | 3.5m |
| WEIGHT | 284.2T |
| CAPACITY | 1,500T |
| TYPE | Hopper Barge |



SUMMARY:

One of eight new barges delivered in 2018 as part of the Thames Tideway Tunnel project, designed to be pushed utilising navtugs Felix and Christian. The pusher knees have been designed to allow safe access for the crew from the tug, though the barges can be towed if required. The barges have 12mm steel plate on their bottom and chines and are fitted with a single Pool T.W. HHP anchor with a mass of 1845kg along with 60mm of 32mm anchor chain. Rope baskets and additional LSA equipment ensure the safety of the crew. Tow coupling winches are situated on the sides of the barge both fwd and aft to safely moor them together. All barges will be in class with RINA and able to operate 50 NM to sea.

L I V E T T ' S



WE ARE LIVETT'S

BETTER BY WATER



EMAIL
info@livetts.co.uk



CALL
Tel: +44(0)20 7378 1211



ADDRESS
Knot House, 2-7 Brewery Square,
London, SE1 2LF